

NO. KAD PENGENALAN

--	--	--	--	--	--	--	--	--	--	--	--	--	--	--	--	--	--	--	--

Answer Sheet

ANGKA GILIRAN

--	--	--	--	--	--	--	--	--	--	--

Question No.		Candidate's Answer	Marks	
1				1
2				2
3				3
4				4
5				5
6				6
7				7
8				8
9				9
10				10
11				11
12				12
13				13
14	i			14
	ii			15
15	i			16
	ii			17
16	i			18
	ii			19
17	i			20
	ii			21
18	i			22
	ii			23
	iii			24
19	i			25
	ii			26
20	i			27
	ii			28
21	i			29
	ii			30
22				31
23	i			32
	ii			33
24				34
25	i			35
	ii			36

Section A
(36 marks)

Answer **all** questions. Write your answers in the spaces provided in **Answer Sheet**.
Each answer carries **one** mark.

1. Which of the following are the impacts of ICT on society?
 - I. Health problems
 - II. Borderless environment
 - III. Paperless environment
 - IV. Faster communication speed
 - A. I, II, III
 - B. I, II, IV
 - C. II, III, IV
 - D. I, II, III, IV

2. Which of the following are the functions of Operating System?
 - I. Starting the computer
 - II. Providing a user interface
 - III. Interpreting instructions
 - IV. Managing data and program
 - A. I, II and III
 - B. I, II and IV
 - C. I, III and IV
 - D. II, III and IV

3. File Transfer Protocol is used to _____ .
 - A. read and send email
 - B. read file from your document
 - C. transfer files and perform file commands on the other computer over the Internet
 - D. display and interact with HTML document hosted by web servers or held in a file system

4. FIGURE 1 shows members in a Multimedia Development Team.

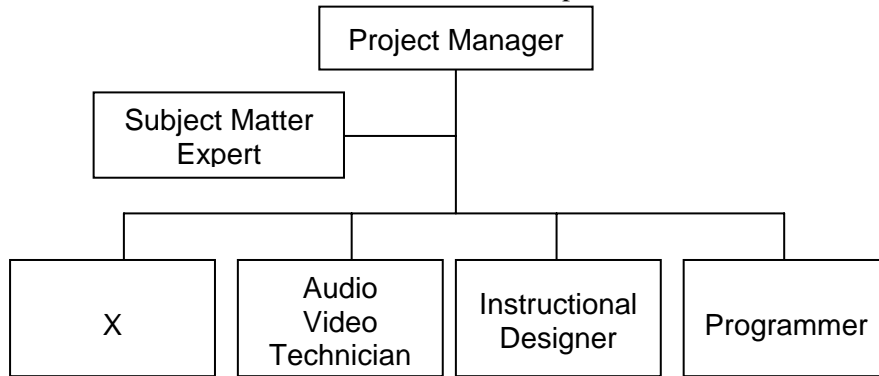


FIGURE 1

- X is _____ .
- Production Manager
 - Graphic Artist
 - Data Analyst
 - Web Designer
5. Structured programming often employs a _____ design model.
- top-down
 - image-oriented
 - bottom-up
 - object-oriented
6. Which of the following shows the correct hierarchy of data?
- Byte, Bit, Record, File, Field
 - Bit, Record, Byte, Field, File
 - File, Record, Field, Byte, Bit
 - Bit, Byte, Field, Record, File
7. Which of the following are the examples of database objects?
- Forms
 - Books
 - Queries
 - Records
- I and II
 - I and III
 - II and III
 - III and IV

8. FIGURE 2 shows the components of Information System.

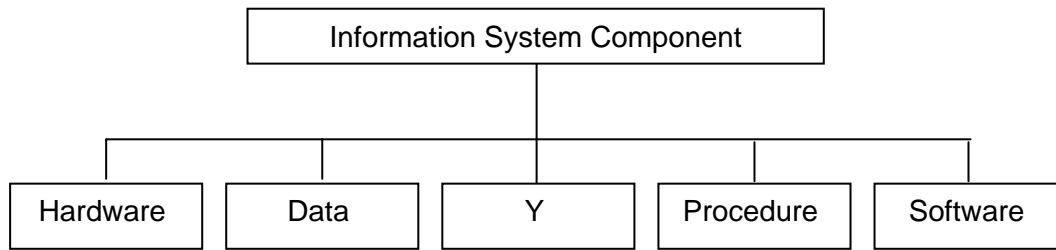


FIGURE 2

Y is _____ .

- A. Input
 B. People
 C. Storage
 D. Peripheral
9. Information and communication technology will help students and teachers in online learning and discussion during education.
10. Input is any data that has been processed into useful form, called information.
11. Client/server network is a network with all the nodes acting as both clients and servers.
12. In non-linear interactivity, the user interacts with the multimedia application without controlling the progress of the content.
13. Assembly language must be converted into machine-readable language before the computer can execute or run the program.
14. i. A query is a description of the records to retrieve from a database, based on certain criteria.
 ii. A form summarises information from the database.
15. TABLE 1 shows different types of computer threats

Computer threat	Description
P	Unauthorized access into a computer system.
R	A program that attaches itself to another program and can destroy or co-exists with the program.

TABLE 1

Name the computer threats:

- i. P
 ii. R

16. TABLE 2 shows statements of output devices

A	A device to display text, graphic and video on screen
B	A device to display text on paper, graphic or transparency film.
C	A device to project what is displayed on the computer on projection screen

TABLE 2

Match A, B or C with the following devices.

- i. Liquid Crystal Display
- ii. Monitor

17. FIGURE 3 shows multimedia devices.

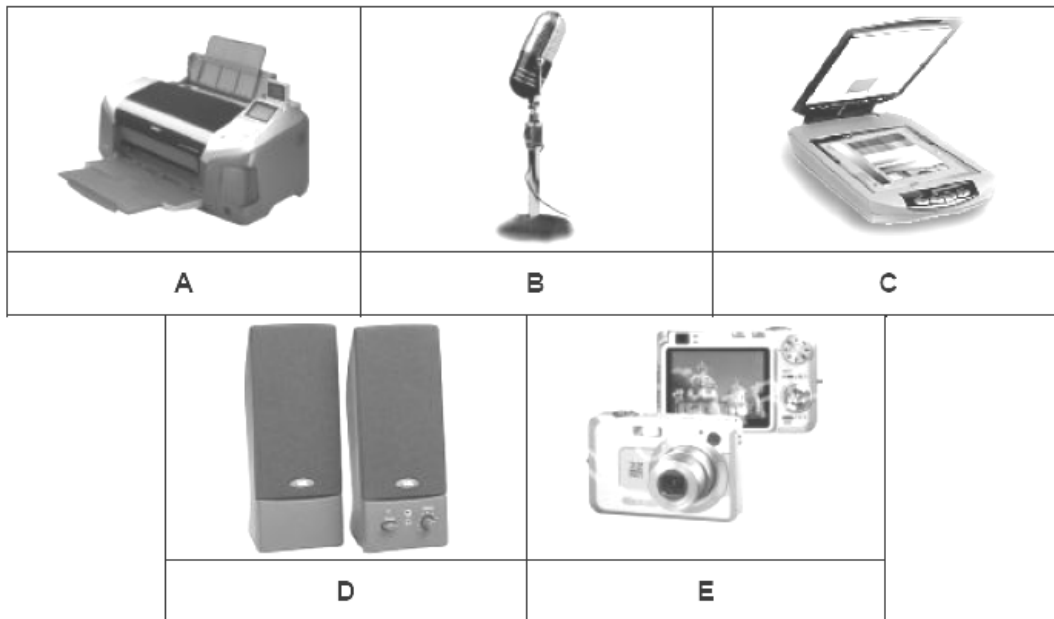


FIGURE 3

Match A, B, C, D or E with the statements below.

- i. The device used to receive sound input.
- ii. The device used to convert conventional images, texts, drawings and photos into digital form.

18. TABLE 3 shows examples of application software.

Corel Draw Adobe Photoshop	MS Access MySQL	Lotus 123 MS Excel	Sun StarOffice Impress MS PowerPoint
A	B	C	D

TABLE 3

Match A, B, C, or D with the following type of application software.

- i. Spreadsheet Application
- ii. Presentation Application
- iii. Graphics Editing Application

19. TABLE 4 shows the devices needed in computer network communication:

Router	Network Interface Card	Modem
Q	R	S

TABLE 4

Match Q, R or S with the computer network communication devices:

- i. The adapter that enables computer or device to access network.
- ii. Connects networks and transmits data to correct destination on network.

20. TABLE 5 shows various types of wireless transmission media.

A	Infrared
B	Satellite
C	Radio Waves

TABLE 5

Match A, B or C to the following statements.

- i. A type of wireless transmission media that can let two devices communicate within 5 metres.
- ii. Bluetooth and WiFi are two technologies that use the same type of transmission media.

21. TABLE 5 shows the concepts in authoring tools

J	Icon
K	Time Frame
L	Card

TABLE 5

Match J, K or L to the following statements.

- i. Elements and events are organized as stacks or pages in a book.
 - ii. Elements and events are organized in a structural framework.
22. X refers to values or moral standards used as a guideline for computer users. What is X?
23. i. A process of detecting and protecting against unauthorised use of the computer is referred to _____.
- ii. Unauthorised use of another person's property with the intention to deny the owner the rightful possession of that property or its use is defined as _____.
24. Windows 2000 Server, Windows Server 2003, Windows NT and RedHat Linux are examples of _____.
25. TABLE 6 shows the different data types used in a program.

Cholesterol Indicator For Ria Clinic

Data Type	P	Integer	Double	Q
Variable	Name	PatientID	Cholesterol Indicator	Normality
Value	Aziza	1234	3.35	YES
	Nadia	1235	8.10	NO

TABLE 6

Based on TABLE 6, state the data type for:

- i. P
- ii. Q