

Section B  
[20 marks]

This section consists of **five** questions. You are required to answer **all** questions.

26. Table 1 shows two situations for two types of computer crime.

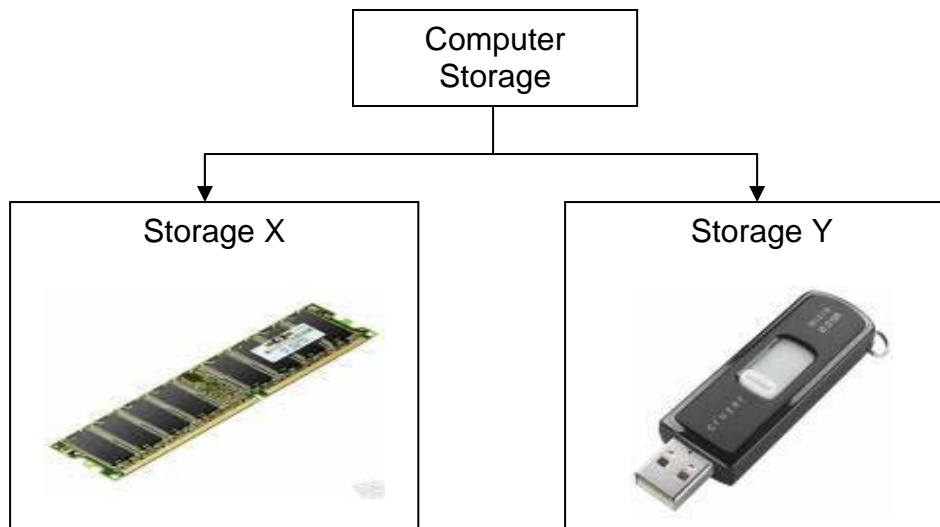
A	B
En. Radzi uses the power of electromagnetic energy to overload computer circuitry.	En. Ahmad likes to download songs, music and movies from one of the commercial company through the Internet. He stores them and sells to his friends.

**Table 1**

Based on the Table 1, answer the following questions.

- a) Explain the type of computer crime in situation A. [2 marks]
- b) Explain the type of computer crime in situation B. [2 marks]

27. Figure 1 shows types of computer storage.



**Figure 1**

Based on the Figure 1, answer the following questions.

- a) State the type of storage Y. Give **another** example of storage Y. [2 marks]
- b) Explain **ONE** function of RAM. [2 marks]

28. Table 2 shows type of network communication technology used by Orient Bank and Synergy Oil accordingly.

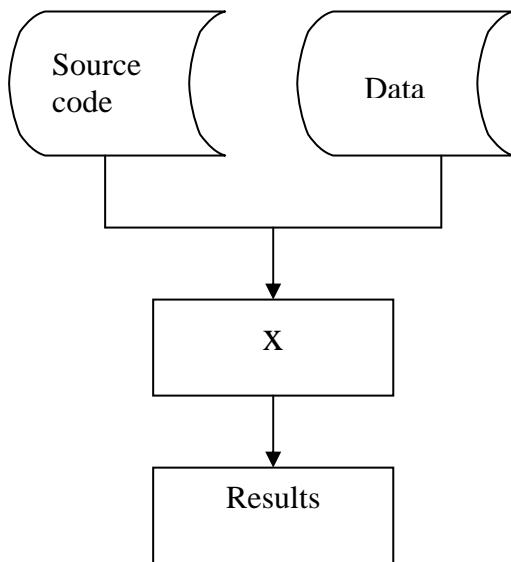
Network Communication Technology for Orient Bank	Network Communication Technology for Synergy Oil
Orient Bank has a private network called OriBNet. This network is secured with network security measures. It is only accessible to authorised users, including the bank employees and its clients.	Synergy Oil has another private secured network to share information among its departments. It is called SyONet. It authenticates its users before they can use it. SyONet allows only employees of the company to access its information.

**Table 2**

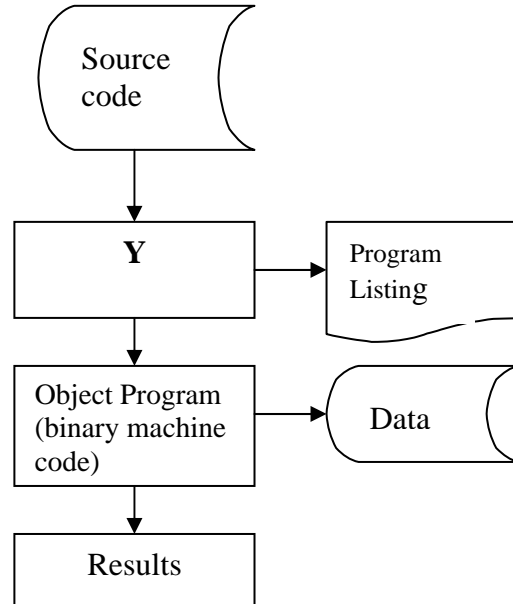
Based on the Table 2, answer the following questions.

- a) State the type of network communication technology used for
  - i. OriBNet
  - ii. SyONet[2 marks]
- b) Define the Internet. [2 marks]

29. Figure 2(a) and figure 2(b) show the translator method of programming.



**Figure 2(a)**

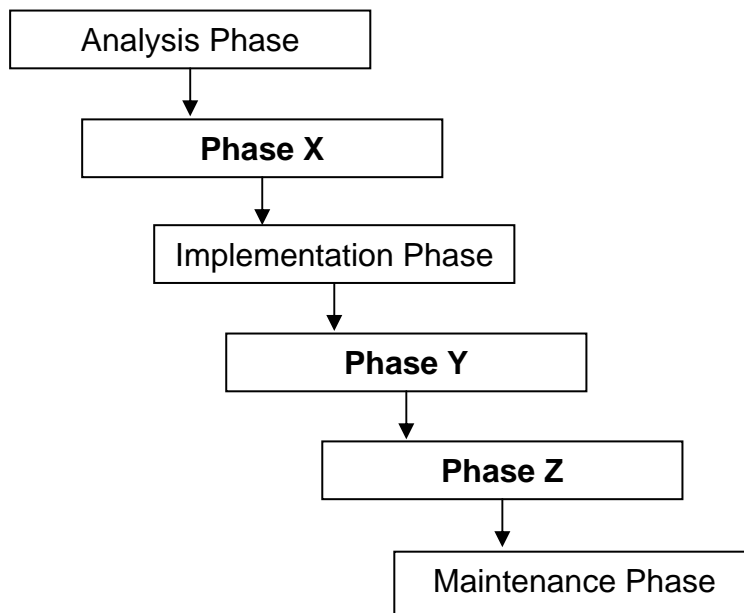


**Figure 2(b)**

Based on the Figure 2(a) and Figure 2(b), answer the following questions.

- a) Explain the translator of X. [2 marks]
- b) Explain the translator of Y. [2 marks]

30. Figure 3 shows six phases in information system development.



**Figure 3**

Based on the Figure 3, answer the following questions.

- a. State phase X and Y. [2 marks]
- b. Explain phase Z in the information system development. [2 marks]

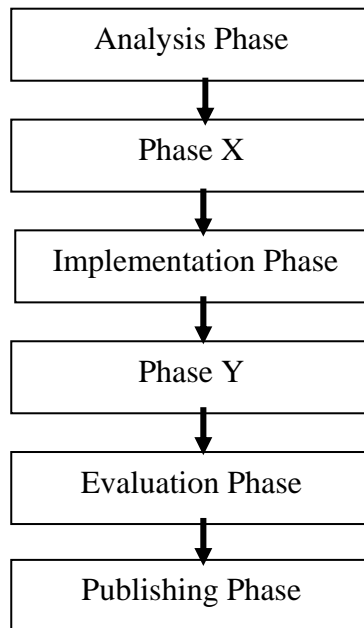
**Section C**  
[ 14 marks ]

This section consists of **three** questions. You are required to answer **two** questions only:

- (i) **Question 31** is compulsory, and  
 (ii) Either **Question 32** or **Question 33**.

**Question 31**

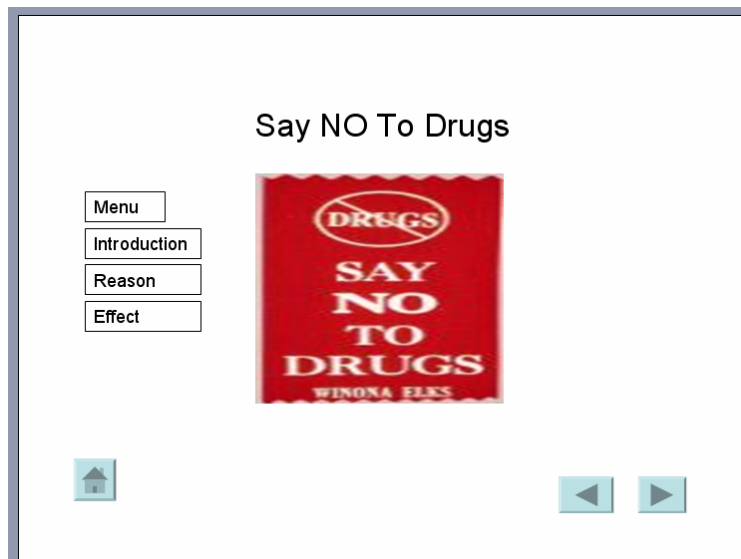
Figure 4 shows the phases in multimedia production.



**Figure 4**

a) Describe the phases X and Y in multimedia production.

[4 marks]



b) The Slide above shows one type of interactivity. Name the type of interactivity used and explain it.

[3 marks]

## Question 32

Ravi had created a database of his friends' contact numbers. Most of his friends have more than one telephone numbers. The data that he had stored in his database are shown as in **TABLE 3** and **TABLE 4** below.

Friend_ID	Name	Address	DateOfBirth
A001	Ahmad	No.34, Jalan Aman 5, Taman Aman, Kulim	12/4/1987
B001	Balu	No.11, Lrg Mewah 3, Taman Mewah, Lunas	25/7/1984
C001	Cindy	11-5, Blok 11, Tmn Paya Terubong, Ayer Hitam	06/7/1980
D001	Darren	102, Seksyen 21, Taman Melisa, Damansara	07/4/1986

Y

Table 3

Friend_ID	PhoneNum
A001	4957267
A001	012-5647323
B001	4847260
C001	4913865
D001	4903654

Z

Table 4

Based on **Table 3** and **Table 4** :

- a)
  - i. Define X [1 mark]
  - ii. State the relationship between X, Y and Z [2 marks]
- b) Identify the types of keys for **Friend\_ID** in **Table 3** and **Friend\_ID** in **Table 4**. Give one difference between these two types of the keys. [4 marks]

**Question 33**

**Figure 5** shows a Visual Basic coding to calculate the Area of a Circle.

```

Private Sub Calculate_Click( )
Dim A As Integer
Const B = 3.142

A = txtA.Text
Area = A * A * B
lbldisplaycircle.Caption = Area
End Sub

```

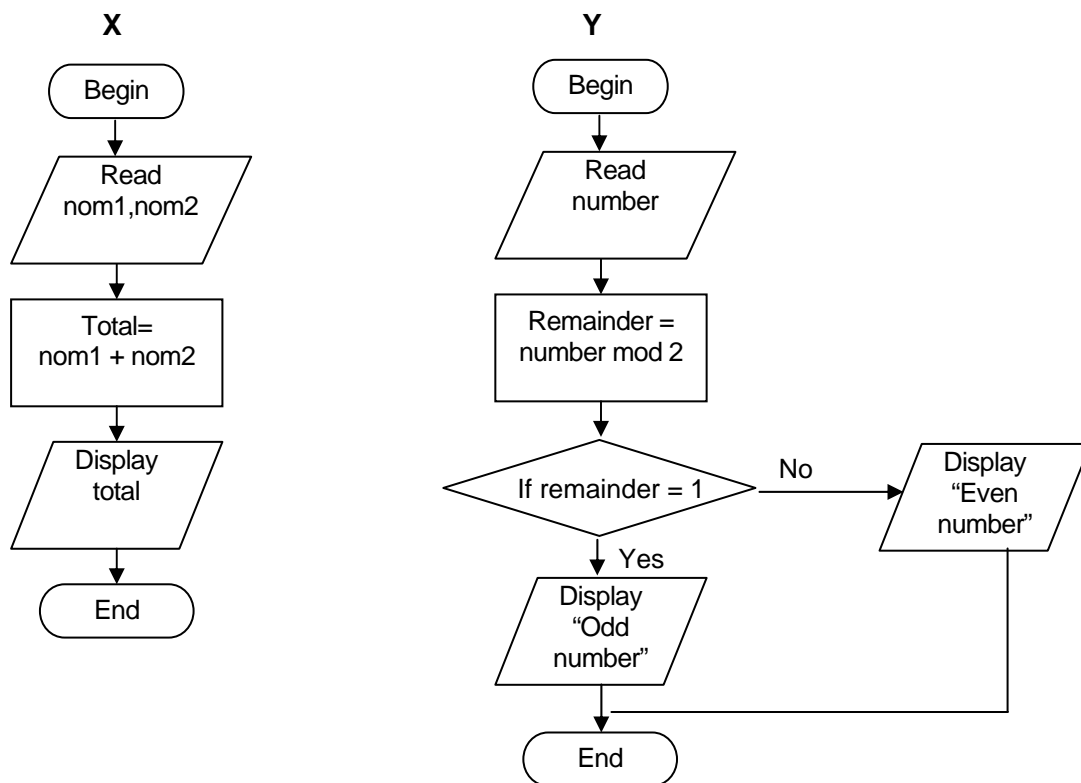
**Figure 5**

Based on Figure 5:

(a) Give the differences between the declaration of **A** and **B**.

[3 marks]

**Figure 6** shows the flow chart of control structure.

**Figure 6**

(b) State **two** differences between control structure X and control structure Y.

[4 marks]