

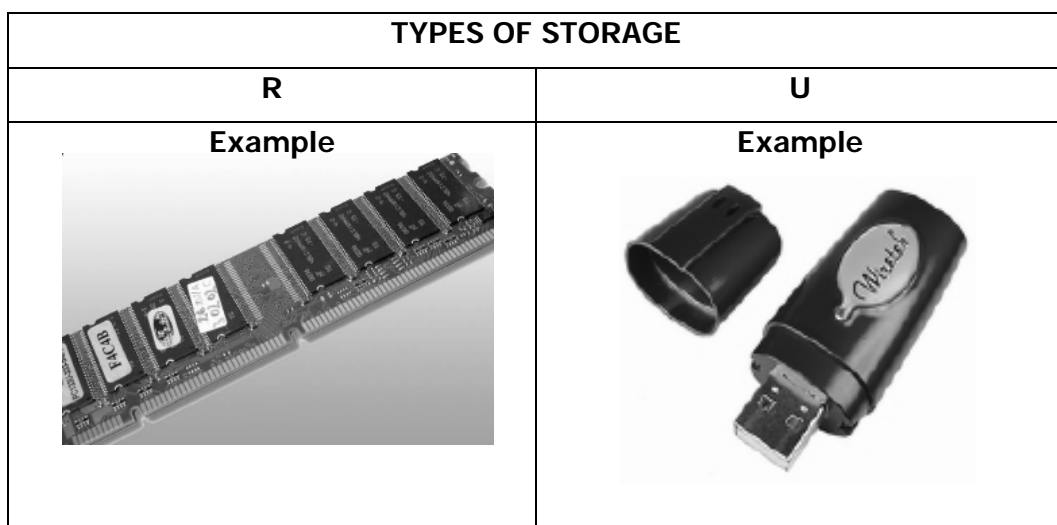
**Section B**  
**Bahagian B**

[20 marks]  
[20 markah]

This section consists of **FIVE** questions. You are required to answer all questions.  
*Bahagian ini mengandungi **LIMA** soalan. Anda dikehendaki menjawab semua soalan tersebut.*

26. Figure 10 shows example devices of types of storage.

*Rajah 10 menunjukkan jenis contoh peranti-peranti storan.*



**FIGURE 10**  
**RAJAH 10**

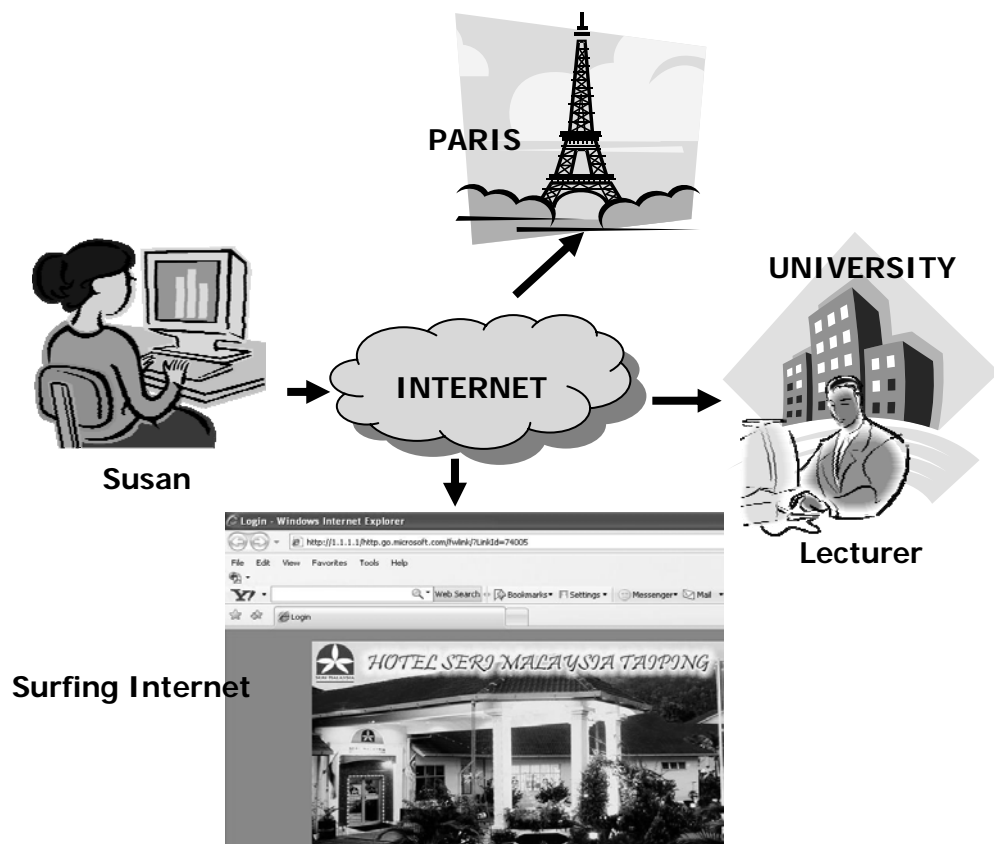
Based on Figure 10;

Berdasarkan Rajah 10;

- (a) Identify type of storage **U** and give **ONE** function of **U**. [2 marks]  
*Kenalpasti jenis storan **U** dan berikan fungsinya.* [2 markah]
- (b) State **TWO** differences between types of **R** and **U**. [2 marks]  
*Nyatakan **DUA** perbezaan di antara jenis storan **R** dan **U**.* [2 markah]

27. Figure 11 show that Susan is surfing the internet. Susan uses the internet facilities for chatting with her friend at Paris. She also communicates with her lecturer through e-learning and surf information using Yahoo search engine.

*Rajah 11 menunjukkan Susan sedang melayari internet. Susan menggunakan kemudahan internet untuk bersembang secara maya dengan kawannya di Paris. Beliau juga berkomunikasi dengan pensyarahnya di universiti melalui e-pembelajaran serta mencari maklumat menggunakan enjin pencarian Yahoo.*



**FIGURE 11**

**RAJAH 11**

- a) State **TWO** devices used to connect to internet. [2 marks]  
*Nyatakan **DUA** peranti yang digunakan untuk dihubungkan ke internet. [2 markah]*
- b) State **TWO** examples of web browser used to surf through internet. [2 marks]  
*Nyatakan **DUA** contoh pelayar web yang digunakan untuk melayari internet. [2 markah]*

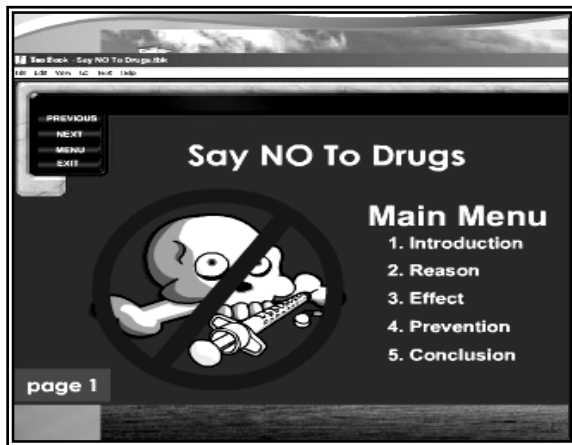
28. Figure 12 shows an interactivity of multimedia.

*Rajah 12 menunjukkan interaktiviti multimedia.*



**FIGURE 12(a)**

***RAJAH 12(a)***



**FIGURE 12(b)**

***RAJAH 12(b)***

- a) Define multimedia and give **ONE** example of audio editor? [2 mark]  
*Beri definisi multimedia dan berikan **SATU** contoh editor audio? [2 markah]*

- b) State the difference between Figure 12(a) and Figure 12(b) for multimedia interactivity

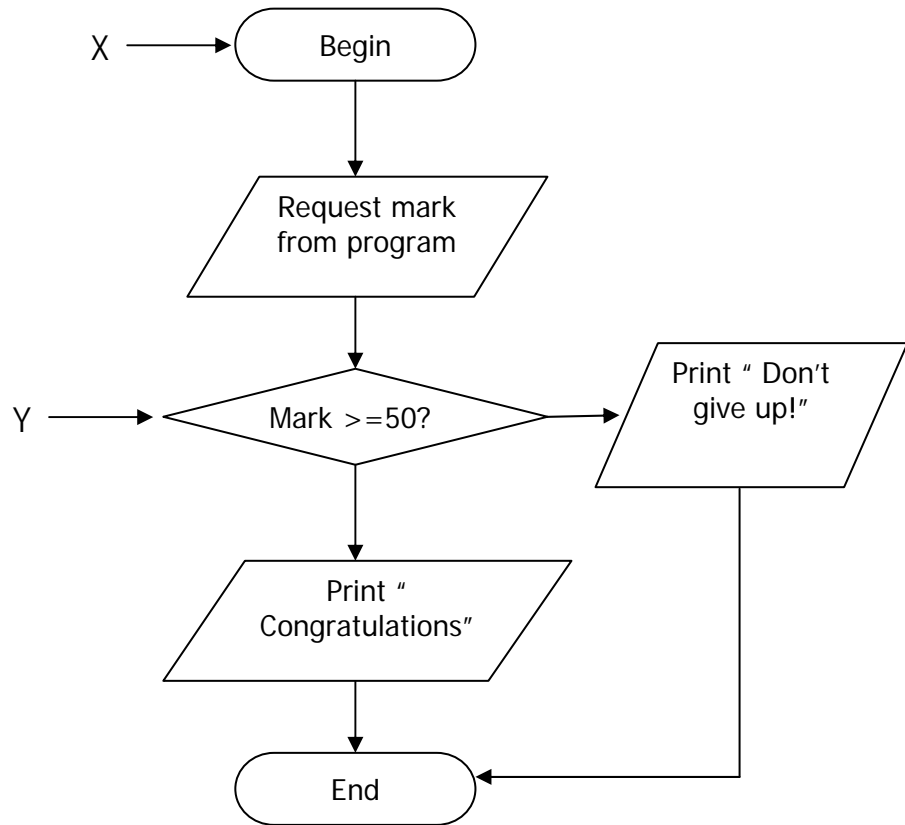
[2 marks]

*Nyatakan perbezaan antara Rajah 12(a) and Rajah 12(b) bagi interaktif multimedia.*

*[2 markah]*

29. Figure 13 is a flow chart (diagram) using symbols.

*Rajah 13 menunjukkan carta alir (diagram) menggunakan simbol-simbol.*



**FIGURE 13**

**RAJAH 13**

- a) Based on the figure above, name the symbol of X and Y. [2 marks]  
 Berdasarkan Rajah di atas, nama simbol X dan Y . [2 markah]
- b) Verify the usage of X and Y. [2 marks]  
 Kenalpasti kegunaan X dan Y. [2 markah]

30. Figure 14 (a) and 14 (b) shows two different types of hierarchy of data.

*Rajah 14 (a) dan 14 (b) menunjukkan dua jenis hirarki data.*

StudentID	A0001	
Name	Khor Zhong Xhen	
Address	44, 5522/17, Damansara Jaya, 47400 PJ, SEL	
MyKod Number	901214-07-5905	

FIGURE 14 (a)

RAJAH 14(a)

StudentID	Student Name	Contact Number
A0001	Khor Zhong Xhen	03 77290604
A0002	Putri bt Zulkanain	03 78564903
A0003	Sulaiman b Yahya	03 78062121
A0004	Aiman b Zubir	03 78061915
A0005	Lim Hock Leong	03 77270275

FIGURE 14 (b)

RAJAH 14(b)

(a) State the **TWO** types of hierarchy of data above.

[2 marks]

*Nyatakan **DUA** jenis hirarki bagi data di atas.*

[2 markah]

(b) Differentiate between the primary key and foreign key.

[2 marks]

*Bezakan antara kekunci primer dan kekunci asing*

[2 markah]